



Start-up and SME Booster

Innovation in Raw Materials

If your start-up:

- Wants to test business ideas
- Would like to meet key players in the raw materials sector
- Is looking for financial and/or non-financial support

EIT RawMaterials has good news for you!

EIT RawMaterials can help you to create and develop new, innovative business ideas in the raw materials sector - covering every stage from initial ideas to business creation and business growth.



EIT RawMaterials is supported by the EIT,
a body of the European Union

How to apply

Applications must be submitted by 15 July 2017.
The application form is available on eitrawmaterials.eu/booster-call-2017/

The second stage is an invitation to pitch your idea to a jury of renowned thematic and business experts.

EIT RawMaterials encourages start-ups and ideas in the following fields:



About EIT RawMaterials

EIT RawMaterials – initiated by the European Institute of Innovation and Technology (EIT) - offers platforms that inspire, connect and help experts to bring ideas to market. EIT RawMaterials activities are designed to foster innovation and entrepreneurship by driving and promoting projects all along the raw materials value chain. Providing a steady supply of raw materials is vital to the European Union, which is why EIT RawMaterials tackles both economic and societal challenges.

EIT RawMaterials is the largest and strongest consortium in the raw materials sector worldwide. Its mission is to boost competitiveness, growth and attractiveness of the European raw materials sector via radical innovation and guided entrepreneurship.

EIT RawMaterials aims to significantly enhance innovation rates in the raw materials sector, sharing knowledge, information and skills: Entrepreneurs, Start-ups and SMEs receive funding and support via our excellent network and collaboration activities.

What support is available?

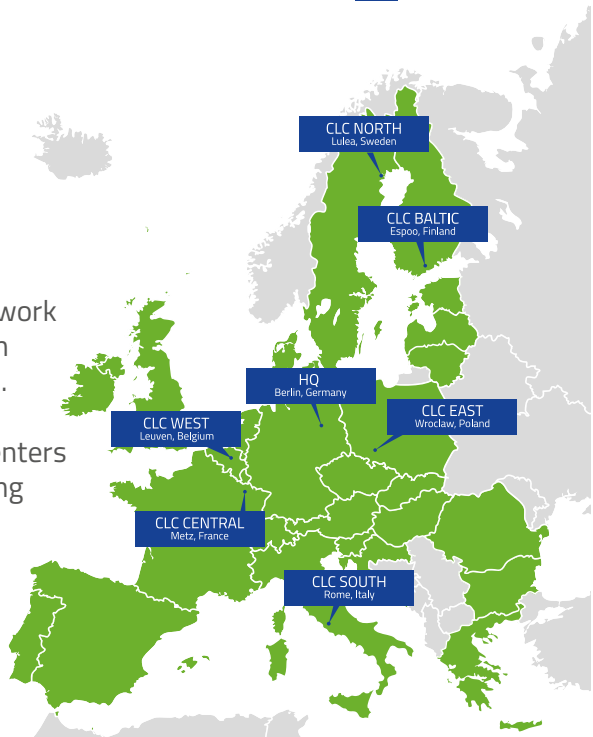
EIT RawMaterials offers funds to boost your growth and help to:

- Drive proof-of-concept or feasibility studies even faster
- Use the infrastructure or services required for IP analysis
- Get expert support to advance technological development

Our locations

EIT RawMaterials has a network of industry players, research institutions and universities.

There are six Co-location Centers (CLCs) across Europe covering the regional ecosystems.



How to get in touch

For start-ups in France, Germany, Portugal and Switzerland, please contact:

CLC Central

Dr. Didier Zimmermann, General Manager

T: +33 640 399 110

E: didier.zimmerman@eitrawmaterials.eu

Dr. Julien Frey, Business Developer

T: +33 649 537 774

E: julien.frey@eitrawmaterials.eu

Nora Groth, Business Developer

T: +49 602 332 039 822

E: nora.groth@eitrawmaterials.eu